

# BRAKE PAD CATALOG

FOR HEAVY COMMERCIAL VEHICLE FRICTION PRODUCTS



**Weger®**

GEPRÜFTE QUALITÄT

Stop is our **JOB**

WEGER BRAKE PADS

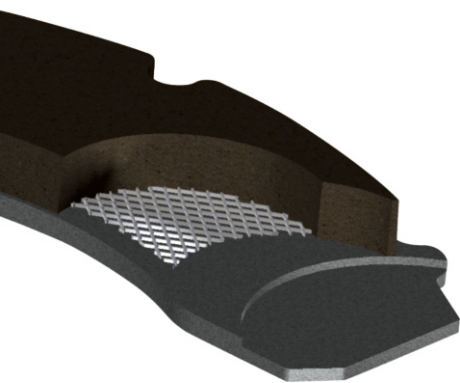
effective, reliable and safe braking solutions...



[www.weger.com.tr](http://www.weger.com.tr)

# WHAT IS SPECIAL ABOUT WEGER AIR DISC BRAKE PADS ?

- ✓ WEGER BRAKE PADS are LUXEMBOURG based E13 & E1 approved
- ✓ WEGER BRAKE PADS are O.E based designed
- ✓ WEGER BRAKE PADS provides the major vehicle applications for the North American market
- ✓ WEGER BRAKE PADS friction material is the new industry standart for friction pad applications
- ✓ WEGER BRAKE PADS eliminate noise and provide long service life and reduced rotor wear
- ✓ WEGER BRAKE PADS with stand extremely high temperatures
- ✓ WEGER BRAKE PADS include a special layer for cleaning the surface of the rotor, allowing a perfect match between the pad and the rotor from the beginning (even with used discs).
- ✓ WEGER BRAKE PADS feature patented technology for mechanical attachment using retention posts and a high shear strength underlayer.
- ✓ WEGER BRAKE PADS are available with necessary hardware kits in box.



Weger supports its customers with technical & engineering expertise designed to assist in the selection of the right friction for the application and designed to enhance your knowledge of brake systems & friction products. Weger provides friction materials for specific applications; from buses to on-highway tractor trailers & vocational trucks.

You are not buying any brakes  
you are BUYING



**"MORE THAN 65 YEARS OF EXPERİNCE"**

**[www.weger.com.tr](http://www.weger.com.tr)**

## ENGINEERING & MANUFACTURING

*WEGER, has local process and project engineering resources, supported by a full scale R&D Center in TURKEY, Istanbul and a Technical Engineering department located at our manufacturing facility in Corlu - TEKIRDAG, TURKEY.*

*WEGER's highly experienced and qualified personnel provide the necessary expertise to develop engineered solutions for all customers braking and friction needs within the NAFTA region.*

## QUALITY ASSURANCE, PERFORMANCE & SAFETY

*Safety is a key aspect in road traffic and industrial manufacturing*

*At WEGER we consider quality as a significant factor for the long-term success of our company. Quality management is therefore a key duty for the organization as a whole and for each and every employee: we are striving to achieve perfection in every process. From all of our international locations in Europe, America and Asia, we strive to produce premium quality friction, to consistently high standards.*

*WEGER's global directives encompass all divisions and processes within the company. In terms of process control, WEGER applies methods such as IATF 16949, E13 - E1 and SNCH reporting system record and monitors all processes and procedures relevant to quality for identifying problems and correct them in real time.*

*WEGER quality assurance program starts from the development of suppliers and their respective raw materials per global guidelines and continues with modern production process control measures and techniques, and finished goods inspection.*

**Production processes are certified by ISO 9001 - IATF 16949, E13 and E1 homologation.**

These logos, brands and models belong to companies their trademark. These are only used for presentation.



## Tests routinely performed by SNCH certified external labs

- O.E. Wear vs. Temp Test
  - Chase Test
  - Krauss Test
  - Hardness
  - Density
  - Particle Size
  - Moisture Content
  - Bulk Density
  - Compressibility
  - Shear Strength
- ✓ Up to 300,000 kilometers of testing  
Intensive NVH testing (Noise, Vibration, Harshness) and comfort engineering
  - ✓ Up to 2,000 hours of dynamometer testing
  - ✓ Computerized evaluation of braking performance and wear pattern
  - ✓ Rigorous homologation testing in real-life conditions



Analysis, improvement and standardization of processes lead to a better understanding of our products, less sources of error and a higher level of quality for our brake linings.

Extensive testing. WEGER also performs control vehicle tests in the field supervised by WEGER's technical and engineering personnel, generating follow up results on friction and braking performance, wear of lining or pads, and impact on other brake system components.

With this, you can rely on our products to offer you the best for your money and effective, safe braking every time.

These logos, brands and models belong to companies' trademark. These are only used for presentation.



## ECOLOGICAL STANDARDS FOR FRICTION MATERIALS



We have been at the forefront of environmental protection within the friction industry for a number of years.

Almost a decade ago the company was instrumental in the development of environmental classification standards for friction materials. It ranges universally recognized standard.

The product portfolio of WEGER has been constructed in line with the corresponding environmental requirements and it is constantly being improved.

We believe that we have a responsibility to conserve the planet's precious resources wherever possible therefore we have set ourselves ambitious energy reduction targets and strict recycling processes.

## WARRANTY LIMITATIONS

*WEGER warrants that all of its products are merchantable, free from defects and fit their intended use, in conformity to North American laws, rules and regulations, with such conformity properly certified. All products are covered by WEGER's standard product warranty, consistent with standard practices within the industry.*

*it is important to note that the use of the "applications chart" in this catalog should only be used as a general reference guide. the correct material for your application depends on vehicle design/use/driving conditions, and it is recommended to be reviewed with experienced professionals.*

These logos, brands and models belong to companies their trademark. These are only used for presentation.

\*Brands are copyright,  
only for reference info

- ▶ Arvin Meritor
- ▶ Bendix
- ▶ BPW
- ▶ DAF
- ▶ Dennis Bus
- ▶ Daimler
- ▶ EvoBus
- ▶ Haldex
- ▶ International
- ▶ Iveco
- ▶ Irisbus
- ▶ Kamaz
- ▶ Kässbohrer
- ▶ Knorr-Bremse
- ▶ MAN
- ▶ Mercedes-Benz
- ▶ Neoplan
- ▶ Paccar
- ▶ Perrot / Wabco
- ▶ Renault Trucks
- ▶ SAF-Holland
- ▶ Scania
- ▶ Solaris
- ▶ Van Hool
- ▶ Valx-Achsen
- ▶ Volkswagen
- ▶ Volvo Trucks & Buses
- ▶ WarsteinAchsen

**“WEGER – THE BRAKING TECHNOLOGY”** As the leading supplier of O.E. friction to the commercial vehicle market, WEGER works closely with the vehicle and brake system manufacturers to engineer a range of friction materials that are specific to individual vehicles and their braking systems – WEGER provides the optimum braking solution. WEGER is fitted by the leading brake and vehicle manufacturers worldwide to service a full range of commercial vehicles including trucks, trailers, buses and coaches. WEGER PREMIUM O.E. QUALITY products are also designed for discerning long life focused customers and fleets. From transit & coach buses to on-highway trailers and vocational trucks, WEGER provides the optimum braking solution. All WEGER formulas have the following qualities and characteristics:

- O.E.releases and approvals
- Excellent safety and performance properties
- Sophisticated braking comfort and feel
- Long service life, providing excellent cost per mile
- Are designed to meet or exceed computerized evaluation standards for braking performance and wear

These logos, brands and models belong to companies their trademark. These are only used for presentation.



# CUSTOMER SERVICE

The consolidation of all aspects of this quality program would not be feasible without the right trained people. Based on this, the global Quality process is supported by the training program for our employees.

You can rely on WEGER to provide experienced customer service representatives who will answer all your questions concerning our products, technical specifications, applications, pricing, order process & tracking, billing, and any other request that you may have.

These logos, brands and models belong to companies their trademark. These are only used for presentation.



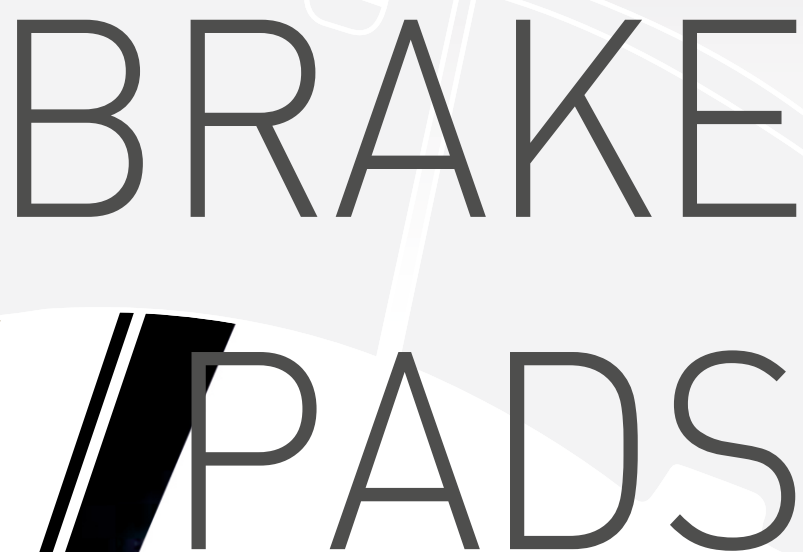


# weger®

## GEPRÜFTE QUALITÄT

BRAKING  
TECHNOLOGY

---



# BRAKE PADS

These logos, brands and models belong to companies their trademark. These are only used for presentation.

# WEGER CROSS #



WEGER # SNCH E13 CERTIFICATION # WVA

WEGER NO		WVA NO	OEM NO	DESCRIPTION
WGR10000BS	E13	29087	980102570	MERCEDES AXOR, IVECO E.TECH, SCANIA,DAF, BPW, SAF, MAN
WGR10020BS	E13	29167	980102570	FREHAUF-DORSE BPW DINGIL
WGR10021BS	E13	29171	9080106440	KOGEL DORSE
WGR10030BS	E13	29165	98106430	BPW DINGIL JUMBO
WGR10031BS	E13	29162	30578400	SAF DINGIL
WGR10041BS	E13	29093	98102930	MERCEDES ATEGO & IVECO EUROCARGO 220
WGR10061BS	E13	29084	81508205005	MERCEDES O 403 - O 404 BUS
WGR10071BS	E13	29088	12999667	MAN 12 - 153 FRONT / BMC PROBUS FRONT / BMC PRO 518
WGR10081BS	E13	29131	81508205072	RENAULT MIDLUM 270 & PREMIUM 370/420 & MAGNUM DXI
WGR10091BS	E13	29174	5001864363	FORD CARGO 1846T(2012)-RENAULT 440 PREMIUM-VOLVO FE-FM SERI
WGR10101BS	E13	29125	1078439	VOLVO FH 12 420 SERISI > 2006
WGR10121BS	E13	29246	00.64201420	MERCEDES ACTROS FRONT NEW MODEL
WGR10131BS	E13	29244	00.64201520	MERCEDES ACTROS BACK NEW MODEL
WGR10141BS	E13	29090	5001831161	RENAULT MAGNUM PREMIUM DXI & PREMIUM 385 /400
WGR1029115BS	E13	29115	000.4211010	MAN 12.180 OTOKAR SULTAN
WGR1029228BS	E13	29228	0.5092090130	BPW Y.MODEL
WGR1029279BS	E13	29279	509.290.120	MAN TGX
WGR1029173BS	E13	29173	5.001.864.365	RENAULT TRUCK 440
WGR1029195BS	E13	29195	993887	SAF DORSE
WGR1029227BS	E13	29227	509.290.120	BPW
WGR1029315BS	E13	29315	00.14215210	AROCS NEW MODEL

These logos, brands and models belong to companies their trademark. These are only used for presentation.

[www.weger.com.tr](http://www.weger.com.tr)

# WEGER CROSS #



WEGER # SNCH E13 CERTIFICATION # WVA

WEGER NO		WVA NO	DESCRIPTION
WGR1025749BS	E13	25749	MITSUBISHI CANTER EURO 5 FUSO
WGR1029331BS	E13	29331	SCANIA
WGR1029332BS	E13	29332	NEW SCANIA
WGR1029141BS	E13	29141	RENAULT, DAF
WGR1029142BS	E13	29142	RENAULT, DAF
WGR1029403BS	E13	29403	NEW BIW
WGR1029404BS	E13	29404	NEW BIW
WGR1029190BS	E13	29190	MERCEDES SPRINTER ARKA
WGR1029192BS	E13	29192	MERCEDES SPRINTER, VOLKSWAGEN CRAFTER FRONT
WGR1029200BS	E13	29200	MERCEDES SPRINTER, VOLKSWAGEN CRAFTER FRONT
WGR1029217BS	E13	29217	MERCEDES SPRINTER, VOLKSWAGEN CRAFTER BACK
WGR1025602BS	E13	25602	FORD TOURNEO CUSTOM FRONT
WGR1025603BS	E13	25603	FORD TOURNEO CUSTOM BACK
WGR1025604BS	E13	25604	FORD TOURNEO CUSTOM BACK
WGR2023577BS	E13	23577	FORD TRANSIT V184 FRONT
WGR2024484BS	E13	24484	FORD TRANSIT V347 FRONT
WGR2024486BS	E13	24486	FORD TRANSIT V347 BACK

These logos, brands and models belong to companies their trademark. These are only used for presentation.

[www.weger.com.tr](http://www.weger.com.tr)



# WEGER CROSS NUMBERS - FULL CHART

## WGR10000

WVA 29087  
WVA 29042  
WVA 29046  
WVA 29056  
WVA 29059  
WVA 29061  
WVA 29105  
WVA 29108  
WVA 29109  
WVA 29163  
WVA 29167  
WVA 29179  
WVA 29196  
WVA 29201  
WVA 29202  
ABEX ADB1203FE  
BPW 09.801.02.57.0  
BPW 09.801.02.92.0  
BPW 09.801.06.20.0  
DAF 143 9324  
DELPHI LP1039  
DON CVP020  
EFI EDB1328  
FEBI 10322  
FERODO FCV1328BFE  
FERODO FCV1373BFE  
FERODO FCV1598BFE  
FERODO FCV1328BFE  
FERODO FCV1328BFE  
FERODO FCV1328BFE  
FERODO FCV1598BFE  
FERODO FCV1313  
FERODO FCV1914FE  
FRUEHAUF M910045-02  
IVECO 299 2476  
IVECO 299 5637  
IVECO 299 5819  
IVECO 299 6378  
IVECO 299 6515  
IVECO 4121 1278  
JURATEK JCP988  
JURID 29108  
KNORR K000543  
KNORR SB7600  
KNORR 18372  
KNORR 18375  
KNORR 31987  
KNORR 31988  
KNORR 32940  
KNORR 33976  
KNORR 34902  
KNORR 34939  
KNORR 34941  
MAN 81 50820 6056  
MERCEDES 000 421 05 10  
MERCEDES 000 421 38 10  
MERCEDES 000 423 66 10  
MERCEDES 002 420 49 20  
MERCEDES 002 420 70 20  
MERCEDES 003 420 10 20  
MERCEDES 003 420 16 20  
MERCEDES 003 420 20 20  
MERCEDES 003 420 22 20  
MERCEDES 003 420 35 20  
MERCEDES 003 420 66 20  
MERCEDES 004 420 22 20  
MERITOR MDP9001  
MERITOR MDP1373  
MERITOR MDP9000  
NEOPLAN 0821 351 00  
PAGID C1004  
SAE 09291-037  
SAF 3 057 0077 00  
SAF 3 057 0079 00  
SAF 5 317 0023 00  
SCANIA 1 390 428  
SCANIA 1 734 529  
SCANIA 1 890 861  
SCHMITZ 1080920  
SETRA 8 285 000 571  
SETRA 8 285 515 573  
SMB M9100402  
TEXTAR 29202  
TRAXX TRX1988  
TRW GDB5067  
TTC 61178  
WINNARD WP1328  
ZF PARTS 0501 210 371  
ZF PARTS 0501 298 143

## WGR10020

WVA 29167  
BPW 05.092.90.07.0  
BPW 05.092.90.09.0  
BPW 09.801.06.45.0  
BPW 09.801.06.96.0  
DON CVP092  
EFI EFC131  
FERODO FCV1677B  
KNORR K003487  
KNORR K011470K0  
KNORR K015946  
MERITOR MDP1677  
TEXTAR 2916702  
WINNARD WP131

## WGR10021

WVA 29171  
WVA 29158  
BPW 05.092.90.08.0  
BPW 09.801.06.44.0  
BPW 09.801.06.95.0  
ABEX ADB1369  
FERODO FCV18258  
KNORR K011471K50  
KNORR K015947  
MERITOR MDP1789  
TEXTAR 29171 300  
TEXTAR 2917104  
VALEO 541720

## WGR10031

WVA 29162  
DON CVP096K  
FERODO FCV1828  
PAGID C4072  
SAF 3 057 0084 00  
TEXTAR 29162 317  
WABCO PAN 22-1  
PERROT 12 999 796

## WGR10041

WVA 29093  
WVA 29094  
WVA 29095  
WVA 29096  
WVA 29145  
WVA 29184  
WVA 29197  
BPW 02.031.21.50.0  
BPW 02.031.21.60.0  
BPW 09.801.02.75.0  
BPW 09.801.02.93.0  
BPW 09.801.06.21.0  
ABEX ADB1312  
DON CVP036  
FERODO FCV1329BFE  
FERODO FCV1275BFE  
FRUEHAUF M910001-01  
IVECO 299 2336  
IVECO 299 6468  
JURATEK JCP1329  
JURID 2909305390  
KNORR 37775  
KNORR 380280062  
KNORR 37658F0062  
KNORR 37780F0062  
MAN 81 50820 6022  
MAN 81 50820 6008  
MAN 81 50820 5017  
MERCEDES 000 421 07 10  
MERCEDES A002 420 78 20  
MERITOR MDP1329  
MERITOR MDP9003  
MERITOR MDP9002  
PAGID C1014  
PAGID C1006  
SAE 9291-024  
SAF 3 057 0078 00  
SAF 5 317 0024 00  
SCHMITZ 1087988  
SMB M910001-01  
TEXTAR 29095 300 3.4  
TTC 61176  
WINNARD WP1329  
VALEO 541675

## WGR10041-2

WVA 29165  
BPW 05.092.90.05.0  
BPW 05.092.90.10.0  
BPW 09.801.06.43.0  
BPW 09.801.07.24.0  
DON CVP093  
EFI EFC133  
FERODO FCV1678B  
KNORR K003489  
KNORR K011469  
KNORR K060273K50  
MERITOR MDP1678  
TEXTAR 2916503  
TEXTAR 29165 300  
WINNARD WP133  
HALDEX 980106450

## WGR10051

WVA 29175  
TEXTAR 29088 260  
TEXTAR 29091 270  
VALEO 541665  
ROULUNDS 675981  
FERODO FCV1373

## WGR10071

WVA 29088  
WVA 29144  
DAF 143 6901  
ABEX ADB1518  
EFI EDB1279  
EFI EDB1279/1  
FERODO FCV1279  
FERODO FCV1279B  
FERODO FCV1354  
FERODO FCV4283  
FERODO FAI151  
IVECO 190 6467  
JURATEK JCP1279  
KNORR I139104F  
MAN 81 50820 5025  
MAN 81 50820 5079  
MAN 81 50820 6006  
MAN 81 50820 6020  
MERITOR MDP106X  
PAGID C4033  
TEXTAR 29088 260  
TEXTAR 29091 270  
TEXTAR 2908823  
TRW GDB5069  
WINNARD WP1279  
VALEO 541665  
VALEO 541693  
VALEO 541696  
ROULUNDS 675981  
PERROT 12 999 703VT  
PERROT 12 999 698VT  
PERROT 12 182 184  
PERROT 12 999 577  
PERROT 12 999 667VT  
PERROT 12 999 743VT  
PERROT 12 999 782  
RENAULT 5010 848 607

## WGR10091

WVA 29174  
WVA 29187  
WVA 29218  
FERODO FCV4378BFE  
FERODO FCV1855BFE  
FERODO FCV4115BFE  
FERODO FCV1989BFE  
MERITOR MDP5119  
TEXTAR 2917401  
TEXTAR 2917402  
TRW GDB5096  
RENAULT 5001 864 363  
RENAULT 5001 864 364  
RENAULT 7421496555  
RENAULT 7421496555  
ABEX ADB1311  
VOLVO 205 687 14  
VOLVO 210 247 01  
VOLVO 210 247 02  
VOLVO 213 525 70  
VOLVO 214 965 50

## WGR10061

WVA 29084  
WVA 29053  
WVA 29210  
WVA 29083  
DELPHI LP1047  
ABEX ADB1407FE  
DON CVP013  
EFI EDB1086  
EFI EDB760  
FERODO FCV1086B  
FERODO FCV1583B  
FERODO FCV1584B  
FERODO FCV1578BFE  
FERODO FCV1579BFE  
FERODO FCV1585BFE  
FERODO FCV760B  
FERODO FCV1763B  
FERODO FCV1762BFE  
JURATEK JCP760  
KNORR I139100F  
MAN 81 50820 6037  
MAN 81 50820 6035  
MAN 81 50820 6017  
MAN 81 50820 6015  
MAN 81 50820 6005  
MAN 81 50820 6003  
MAN 81 50820 6001  
MAN 81 50820 5041  
MAN 81 50820 5007  
MAN 81 50820 5092  
MAN 81 50820 6047  
MERITOR MDP5039  
MERITOR MDP5001  
MERITOR MDP5055  
MERITOR MDP5066  
MERITOR MDP5038  
MERITOR MDP5000  
MERITOR MDP5054  
MERITOR MDP5065  
MERITOR MDP5050  
MERITOR MDP5051  
MERITOR MDP5017  
MERITOR MDP760  
ARVIN 68325024  
ARVIN 68325012  
ARVIN 68325023  
ARVIN 68325166  
ARVIN 68325011  
ARVIN 68325128  
PAGID C2010  
SETRA 8 285 408 453  
SETRA 8 285 408 463  
SETRA 8 285 408 534  
SETRA 8 285 521 000  
SETRA 8 285 522 000  
SETRA 8 285 525 000  
SETRA 8 285 526 000  
SETRA 8 285 388 435  
SETRA 8 285 388 533  
SETRA 8 285 388 583  
TEXTAR 29084 302 1 4  
TEXTAR 29113 282 1 4  
TEXTAR 2905301  
TRAXX TRX1760  
TRW GDB5000  
TRW GDB5007  
TRW GDB5009  
TRW GDB5010  
TRW GDB5014  
TRW GDB5017  
WINNARD WP760  
ZF PARTS 0501 208 805  
VALEO 541642  
VALEO 541649  
VALEO 541650  
VALEO 541651  
VALEO 541713  
ROR 68325023  
ROR 68325012  
ROR 68325166  
ROR 68325011  
ROR 68325128  
ROULUNDS 674881  
ROULUNDS 648881  
RENAULT 5001 854 341  
RENAULT 5001 823 000  
RENAULT 5001 833 124  
RENAULT 5001 834 075  
KELLET 9029

## WGR10081

WVA 29131  
WVA 29156  
ABEX ADB1310FE  
EFI EFC124  
FERODO FCV1404B  
FERODO FCV1653B  
FERODO FCV1656B  
FERODO FCV1404BFE  
FERODO FCV1653BFE  
FERODO FCV1656BFE  
JURATEK JCP1404  
MAN 81 50820 5039  
MAN 81 50820 5072  
MAN 81 50820 5080  
MAN 81 50820 6051  
MAN 81 50820 6052  
MERITOR MDP1404  
MERITOR MDP5059  
MERITOR MDP5060  
MERITOR MDP5056  
MERITOR MDP5073  
MERITOR MDP5097  
ARVIN 68324558  
ARVIN 68324972  
ARVIN 68325346  
ARVIN 68326015  
ARVIN 58325901  
ARVIN 68325344  
PAGID C2042  
TEXTAR 29131 302  
TRW GDB5086  
WINNARD WP1404  
VALEO 541700  
RENAULT 5001 855 646  
ROR 68323665  
ROR 68324445  
ROR 68324972  
ROR 68323664

## WGR10101

WVA 29125  
FERODO FCV1962B  
TRW GDB5085

## WGR10121

WVA 29246  
WVA 29247  
FERODO FCV4417PTS  
JURID 2924405390  
KNORR K035471K50  
KNORR K046773K50  
MERCEDES A006 420 14 20  
MERCEDES A006 420 52 20  
WVA 29244  
WVA 29245  
FERODO FCV4418PTS  
JURID 2924405390  
KNORR K035472K50  
KNORR K046774K50  
MERCEDES A006 420 15 20  
MERCEDES A006 420 53 20

## WGR10131

WVA 29244  
WVA 29245  
FERODO FCV4418PTS  
JURID 2924405390  
KNORR K035472K50  
KNORR K046774K50  
MERCEDES A006 420 15 20  
MERCEDES A006 420 53 20

## WGR10141

WVA 29090  
DELPHI LP1047  
ABEX ADB1312  
EFI EDB1047  
FERODO FCV1047B  
FERODO FCV1813B  
JURATEK JCP1047  
JURID 2909005390  
KNORR I39106F  
TRAXX TRX2047  
TRW GDB5019  
WINNARD WP1047

## WGR1029228

WVA 29228

## WGR1029279

WVA 29279  
WVA 29168  
FERODO FCV4419

## WGR1029115

WVA 29115  
WVA 29183  
WVA 29116  
WVA 29148  
BPW 09.801.07.07.0  
DON CVP035  
EFI EDB1277  
FERODO FCV1277BFE  
JURATEK JCP1277  
JURID 2914809560  
KNORR K000594  
KNORR K000595  
KNORR K000596  
KNORR K000597  
KNORR K000598  
KNORR K000599  
KNORR K000607  
KNORR K001537  
KNORR K016382  
MAN 81 50820 6043  
MERCEDES 001 421 04 10  
MERCEDES 003 420 11 20  
MERCEDES 003 420 66 20  
MERCEDES 003 420 73 20  
MERCEDES 004 420 61 20  
MERCEDES 003 420 12 20  
MERCEDES 003 420 72 20  
MERITOR MDP107X  
MERITOR MDP1277  
PAGID C1008  
TRW GDB5073  
WINNARD WP1277

## WGR10111

WVA 29011  
DELPHI 999  
DON CVP015  
EFI EDB773  
FERODO FCV773  
IVECO 190 6191  
IVECO 190 6459  
IVECO 299 2479  
JURATEK JCP773  
KNORR I32957  
MERITOR MDP773  
PAGID C3008  
TEXTAR 2901105  
TRAXX TRX1773  
TRW GDB5024  
TTC 60855  
WINNARD WP773

## WGR1029173

WVA 29173  
WVA 29203  
DON CVP100K  
FERODO FCV1856B  
FERODO FCV4377B

## WGR10101

WVA 29195  
FERODO FCV1814BFE  
SAE 09291-072

## WGR1029227

WVA 29227

## WGR1029253

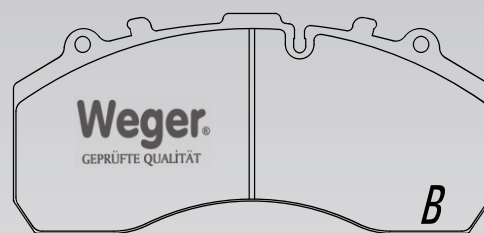
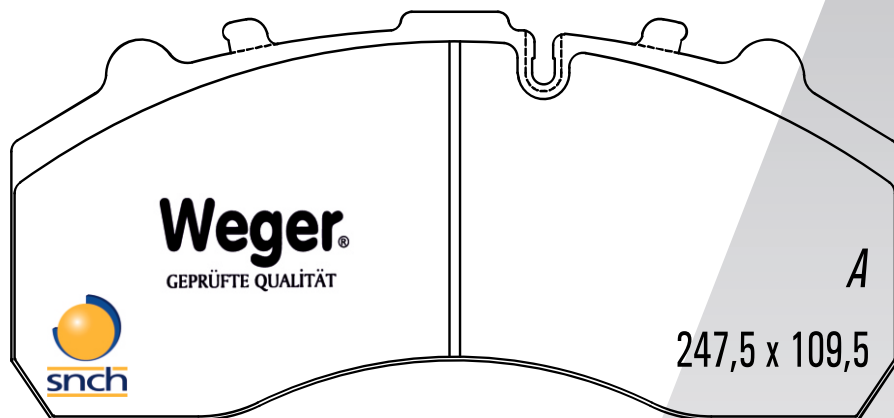
WVA 29253  
FERODO FCV4296PTS  
FERODO FCV4344PTS  
IVECO 299 6515  
IVECO 500054632  
JURID 2925305390  
KNORR K046771K50  
KNORR K046772K50  
MAN 81 50820 6056  
MERCEDES 004 420 22 20  
MERCEDES 004 420 60 20  
MERCEDES 006 420 10 20  
MERCEDES 006 420 11 20  
MERCEDES A004 420 22 20  
MERCEDES A004 420 60 20  
MERCEDES A006 420 10 20  
SETRA 000 421 43 10  
SETRA 006 420 10 20

# Weger®

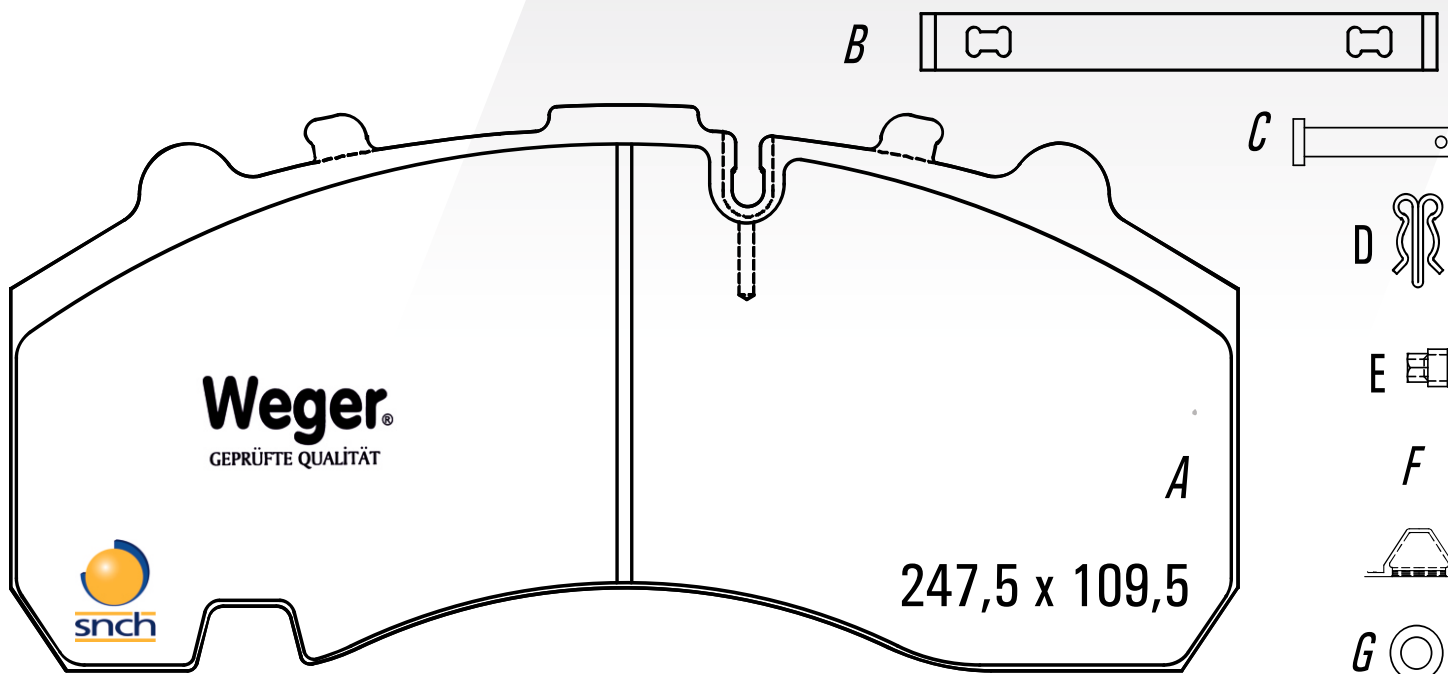
GEPRÜFTE QUALITÄT

## WGR10000 & WGR10020

REFERENCE	T (mm)	REMARKS	MAKE	F/R	WVA No
WGR10000	30	4 PADS PLAIN (A+D+F+G+H+I+J)	MERCEDES BENZ , AUWARTER, BOVA, KASSBOHRER, LIAZ	F/R	29087 29109 29105 29163 29106 29179 29108
WGR10000/1	30	4 PADS PLAIN (B+D+F+G+H+I+J)	MERCEDES BENZ, DAF, MAN, SCANIA, SETRA	F	29105
WGR10000/2	30	4 PADS PLAIN (A+D+F+G+H+I+K+L+M)	MERCEDES BENZ, BOVA, MAN, SCANIA, SETRA	F/R	29087



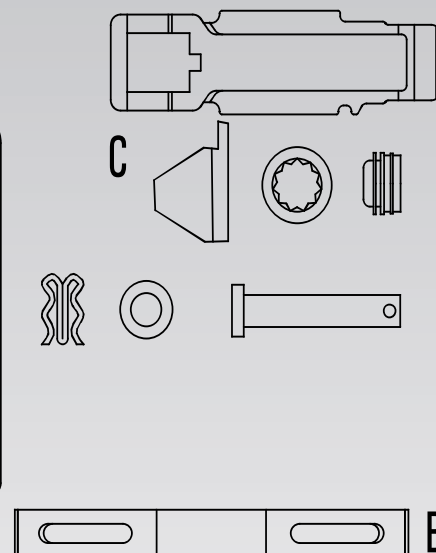
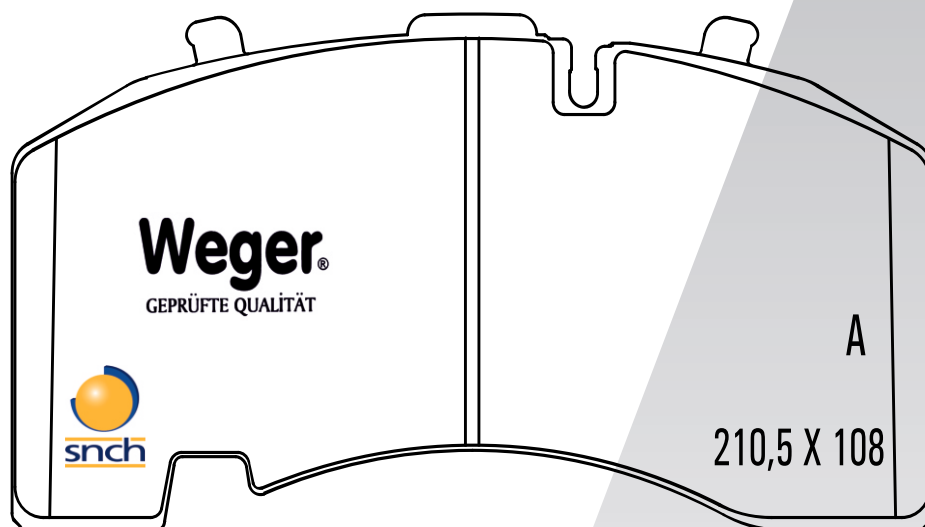
REFERENCE	T (mm)	REMARKS	MAKE	F/R	WVA No
WGR10020	30	4 PADS PLAIN (A+B+C+D+E+F+G)	MERCEDES BENZ, MAN, SCANIA, SETRA	R	29167



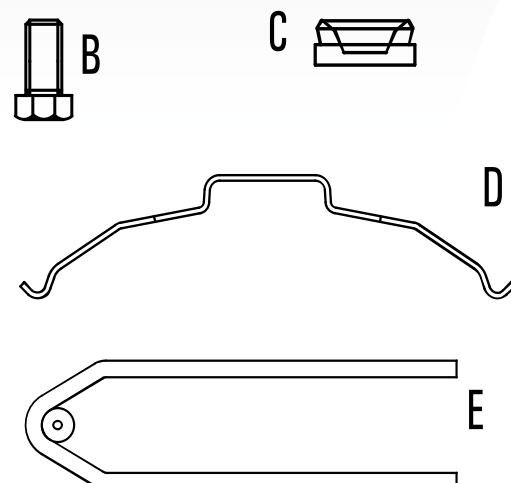
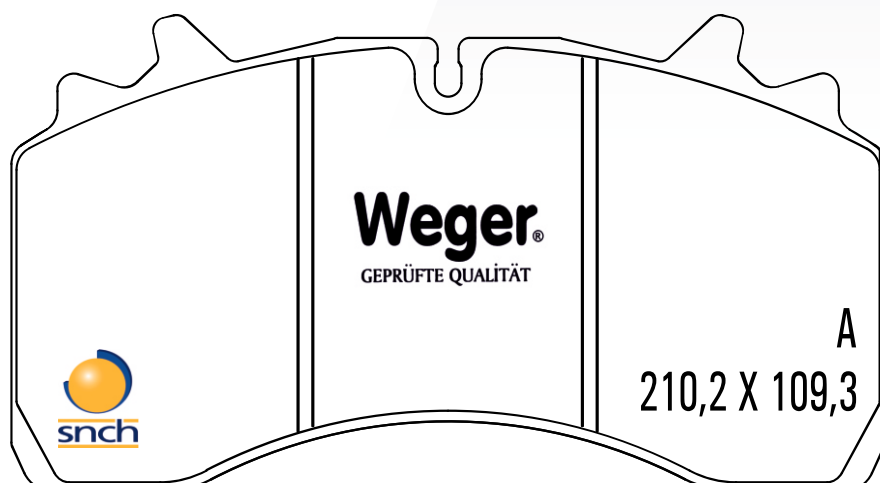
These logos, brands and models belong to companies their trademark. These are only used for presentation.



REFERENCE	T (mm)	REMARKS	MAKE	F/R	WVA No
WGR10021	30	4 PADS PLAIN ( A + B )	KOGEL TRAILER	R	29171
WGR10021/1	30	4 PADS PLAIN ( A + B + C )	KOGEL TRAILER	R	29171

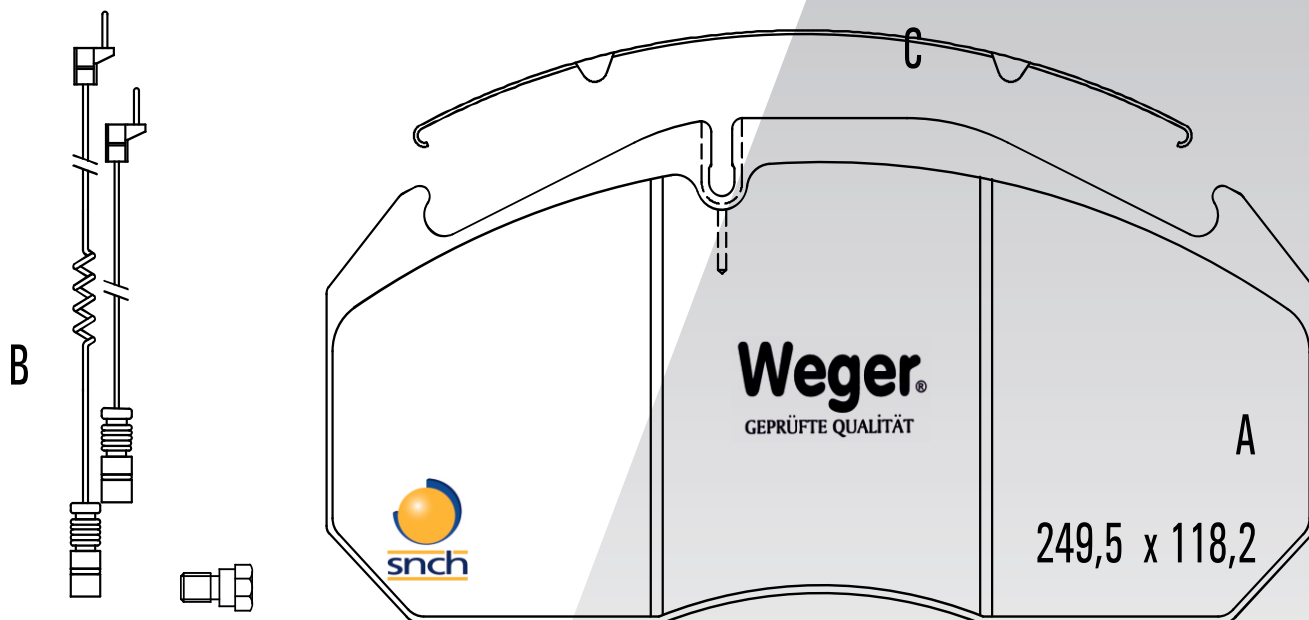


REFERENCE	T (mm)	REMARKS	MAKE	F/R	WVA No
WGR10031	30	4 PADS PLAIN ( A + B + C + D + E )	SAF	R	29162
WGR10031/1	30	4 PADS PLAIN ( A )	SAF	R	29162
WGR10031/2	30	4 PADS PLAIN ( A + D )	SAF	R	29162





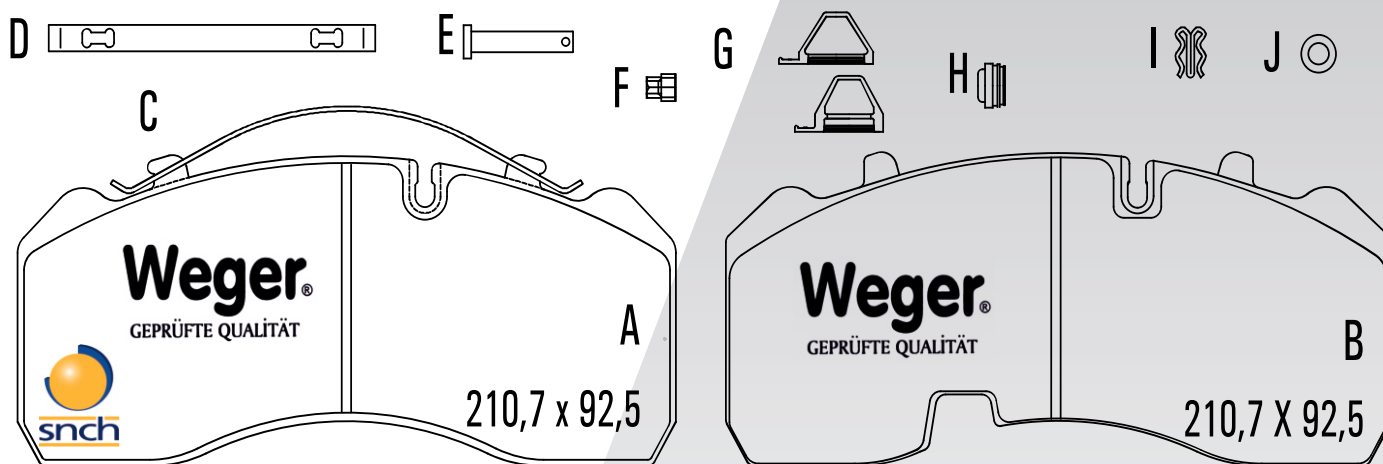
REFERENCE	T (mm)	REMARKS	MAKE	F/R	WVA No
WGR10061	28	2 PADS WITH WEAR SENSOR (A+B+C)	MERCEDES BENZ	F/R	29084
WGR10061/1	28	4 PADS PLAIN (A+C)	MERCEDES BENZ	F/R	29084



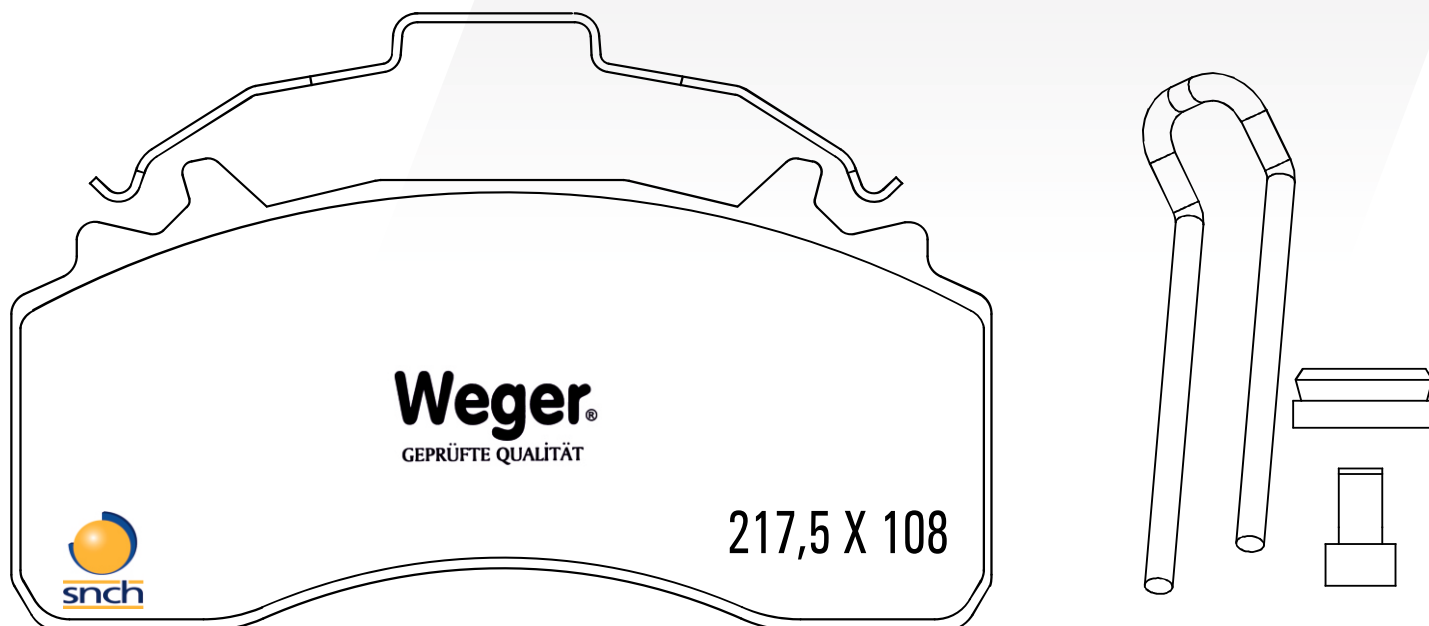
REFERENCE	T (mm)	REMARKS	MAKE	F/R	WVA No
WGR10071	25,5	4 PADS PLAIN (A+B+D+E)	M2000	F/R	29088
WGR10071/1	25,5	2 PADS WITH WEAR SENSOR (A+B+C+D+E)	MAN	F/R	29088



REFERENCE	T (mm)	REMARKS	MAKE	F/R	WVA No
WGR10041	30	PADS PLAIN (A + C)	MERCEDES ATEGO M2000	F/R	29093 29197
WGR10041-2	30	4 PADS PLAIN (B + C)	BPW	R	29165
WGR10041-2 / 2	30	4 PADS PLAIN (B + D + E + F + G + H + I + J)	MERCEDES ATEGO	R	29165



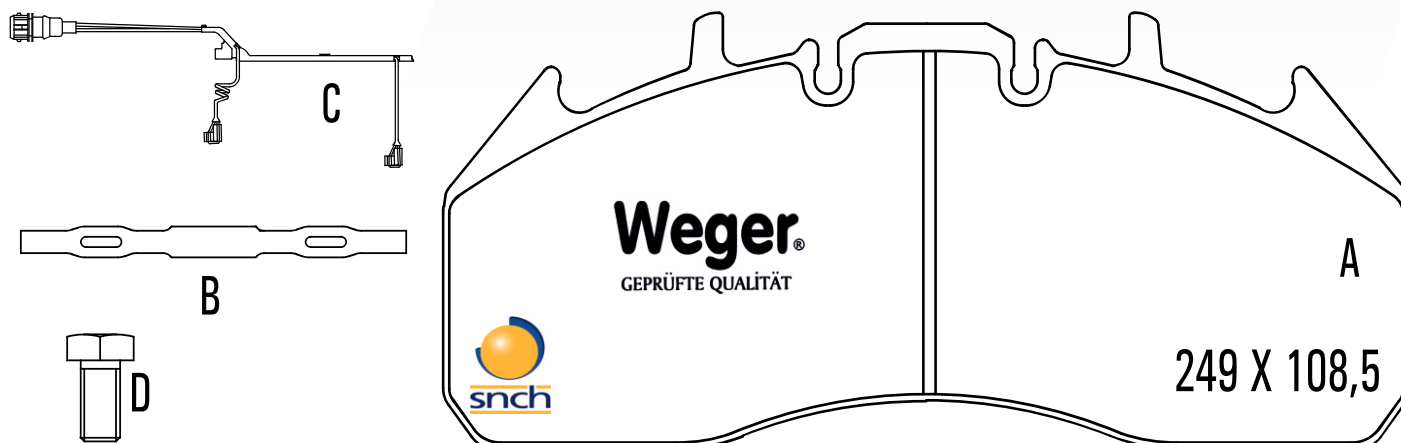
REFERENCE	T (mm)	REFERENCE	MAKE	F/R	WVA NO
WGR1029279	30	4 PADS PLAIN	MAN TGX, WABCO NG22	F/R	29223 29337 29279



REFERENCE	T (mm)	REMARKS	MAKE	F/R	WVA No
WGR10081	30	4 PADS PLAIN(A)	RENAULT	F	29131
WGR10081/1	30	4 PADS PLAIN (A + B + C)	RENAULT	F/R	29131
WGR10081/2	30	4 PADS PLAIN (A + B)	ERF, MAN, RENAULT	F/R	29131

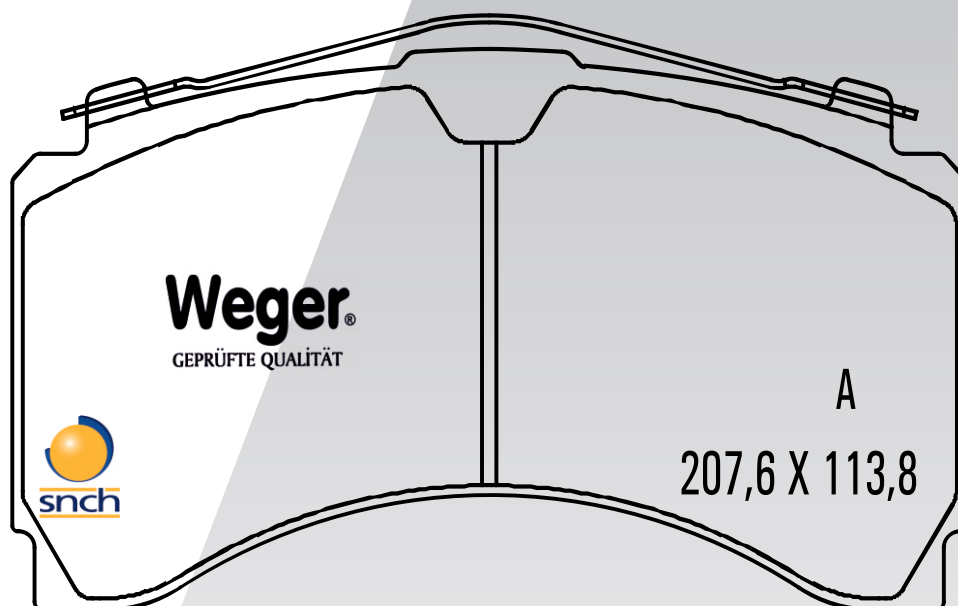
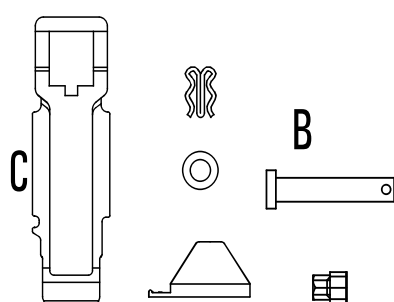


REFERENCE	T (mm)	REMARKS	MAKE	F/R	WVA No
WGR10091	29	4 PADS PLAIN (A+B+D)	RENAULT 440,VOLVO	R	29174
WGR10091/1	29	2 PADS WITH SENSOR (A+B+C+D)	RENAULT 440,VOLVO	R	29174 29187

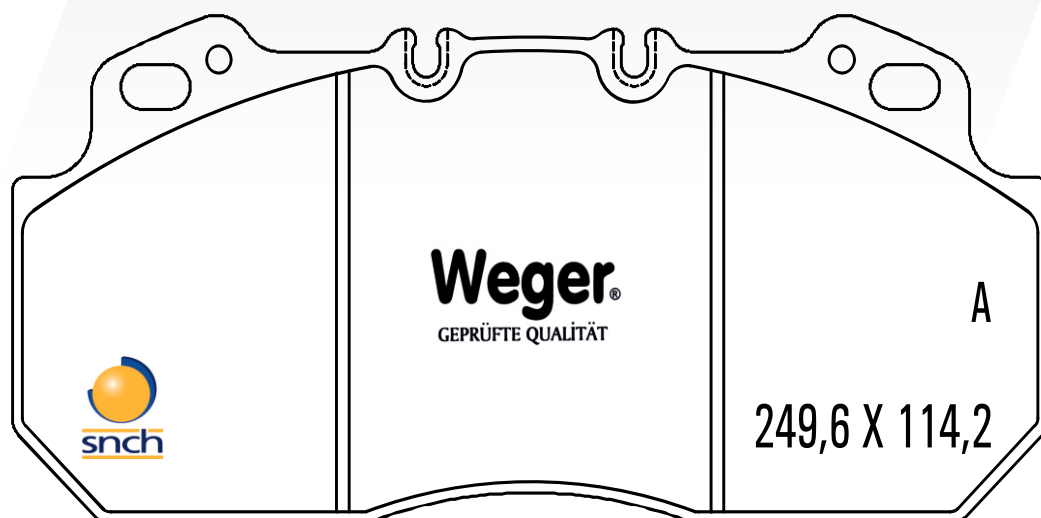
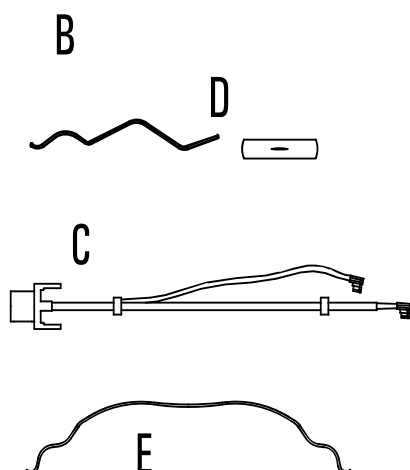




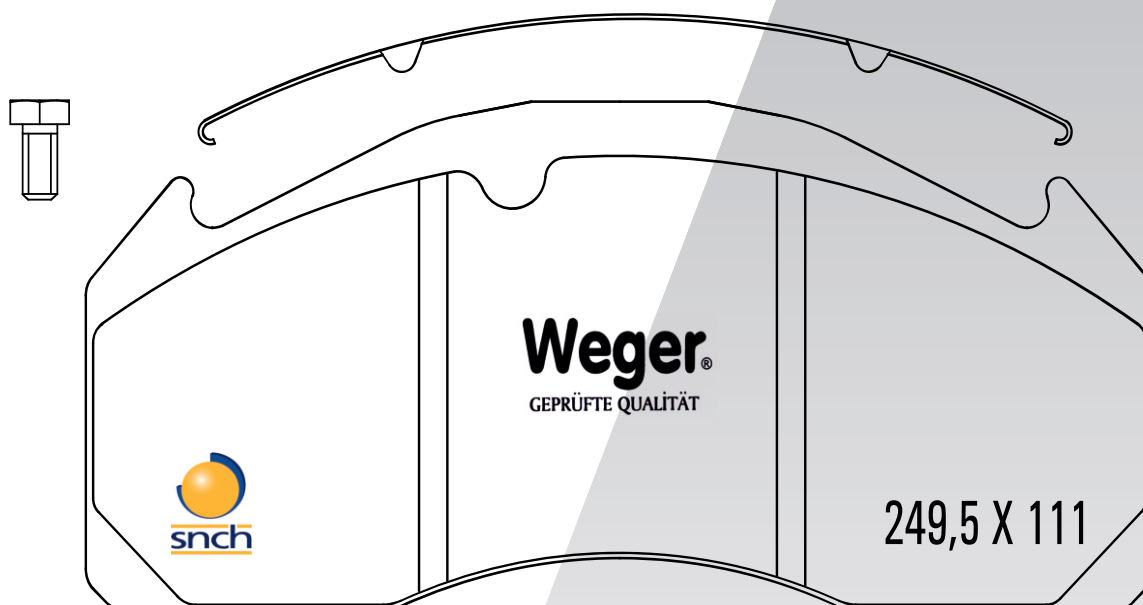
REFERENCE	T (mm)	REMARKS	MAKE	F/R	WVA No
WGR10131	30	4 PADS PLAIN (A+B+C)	MERCEDES	R	29244
WGR10131/1	30	4 PADS PLAIN (A+B)	MERCEDES	R	29244



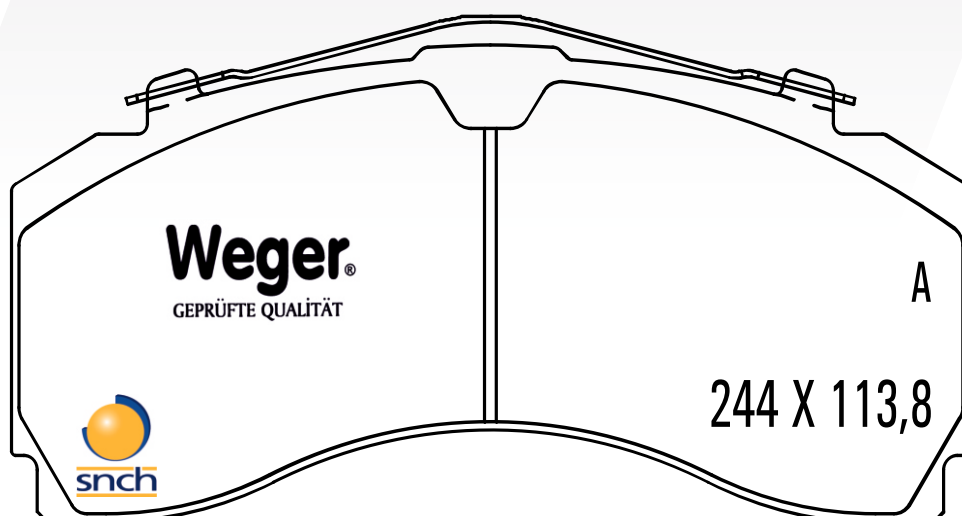
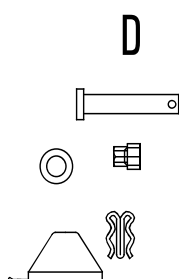
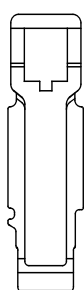
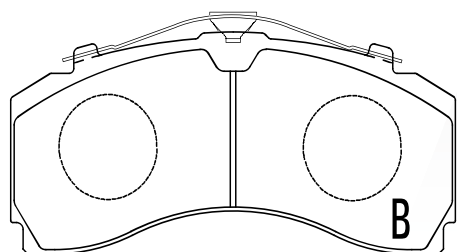
REFERENCE	T (mm)	REMARKS	MAKE	F/R	WVA No
WGR10141	28	2 PADS WITH WEAR SENSOR (A+B+C+D+E)	RENAULT	F/R	29090
WGR10141/1	28	4 PADS PLAIN (A+B+D+E)	RENAULT	F/R	29090



REFERENCE	T (mm)	REMARKS	MAKE	F/R	WVA No
WGR10101	29	4 PADS PLAIN	VOLVO	F/R	29125 29277



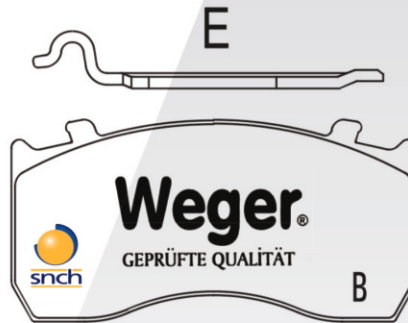
REFERENCE	T (mm)	REMARKS	MAKE	F/R	WVA No
WGR10121	30	4 PADS PLAIN (A + B + D)	MERCEDES	F	20246 20247
WGR10121/2	30	4 PADS PLAIN (A + B + C + D)	MERCEDES	F	20246 20247



REFERANS	T(mm)	İÇERİK	GRUP	F/R	WVA No
WGR1029115	27 34	2 SAG & 2 SOL (A+B+C+D)	MERCEDES BENZ MAN	F/R	29115 - 29116 29148 - 29183
WGR1029115/1	27 34	2 SAG & 2 SOL (A+B+C+D+E)	MERCEDES BENZ MAN	F/R	29115 - 29116 29148 - 29183
WGR1029115/2	27 34	4 BALATA (A+B)	MERCEDES BENZ MAN, OTOKAR	F/R	29115 - 29116 29148 - 29183



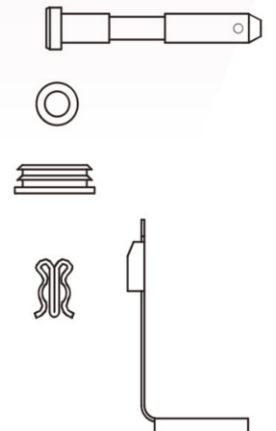
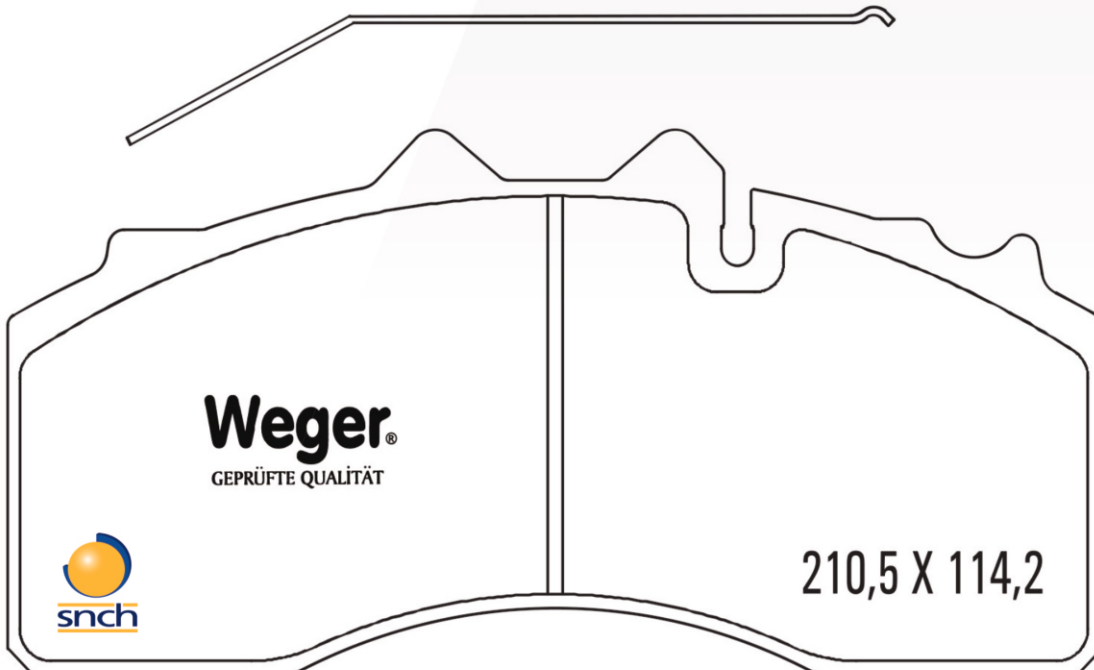
CASTING PLATE 185 X 84



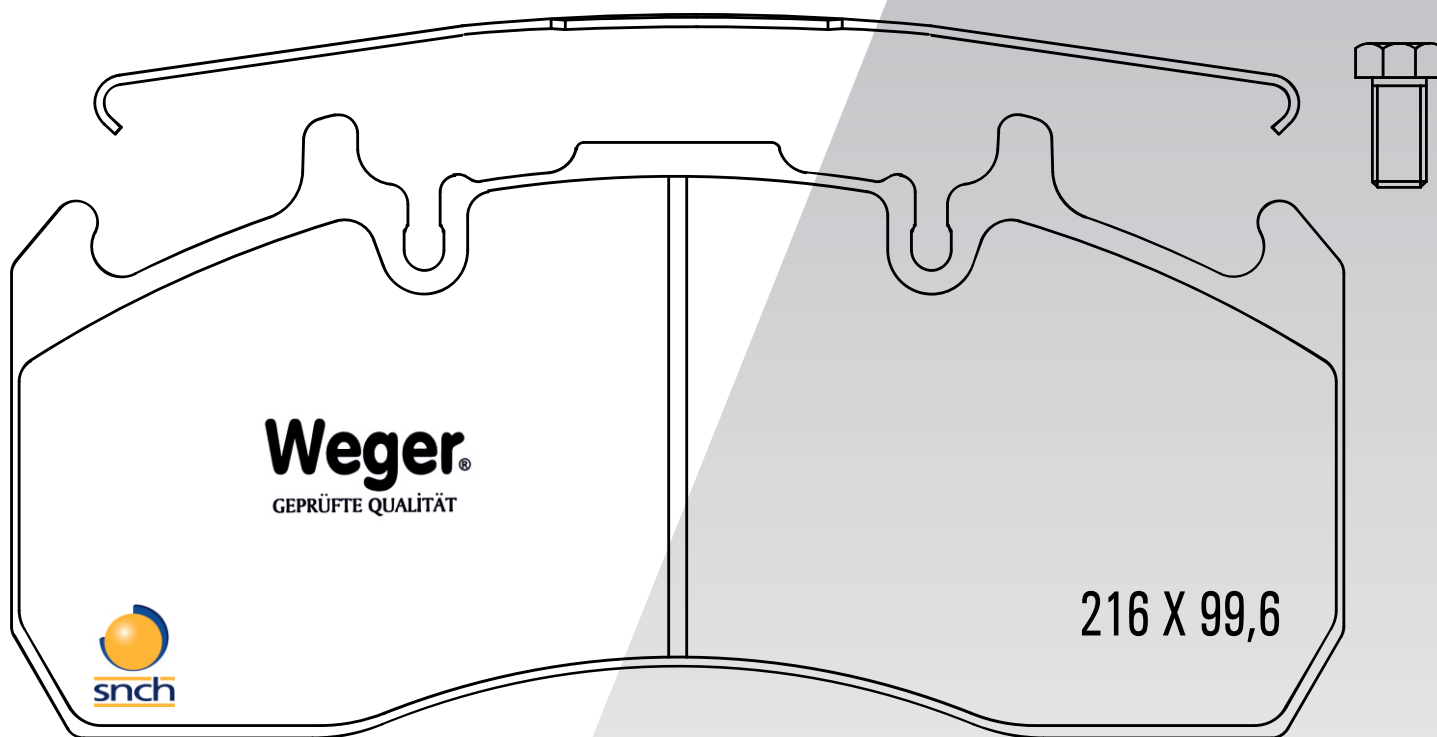
SHEET PLATE 173,6 X 84



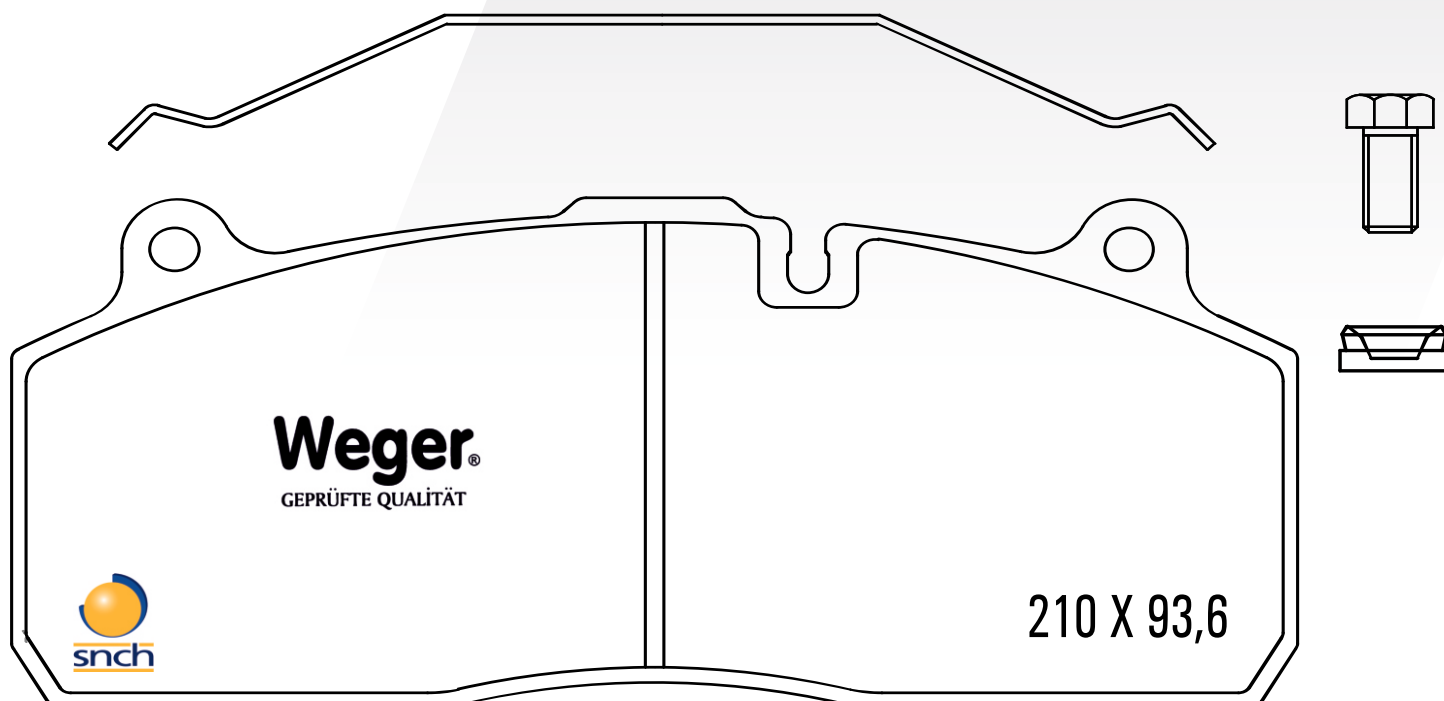
REFERANS	T (mm)	İÇERİK	GRUP	F/R	WVA NO
WGR1029228	30	4 BALATA	BPW	F/R	29228



REFERENCE	T (mm)	REMARK	MAKE	F/R	WVA No
WGR1029173	29	4 PADS PLAIN	RENAULT , VOLVO	F/R	29173

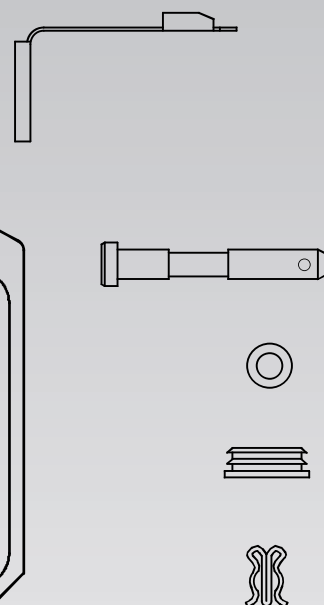
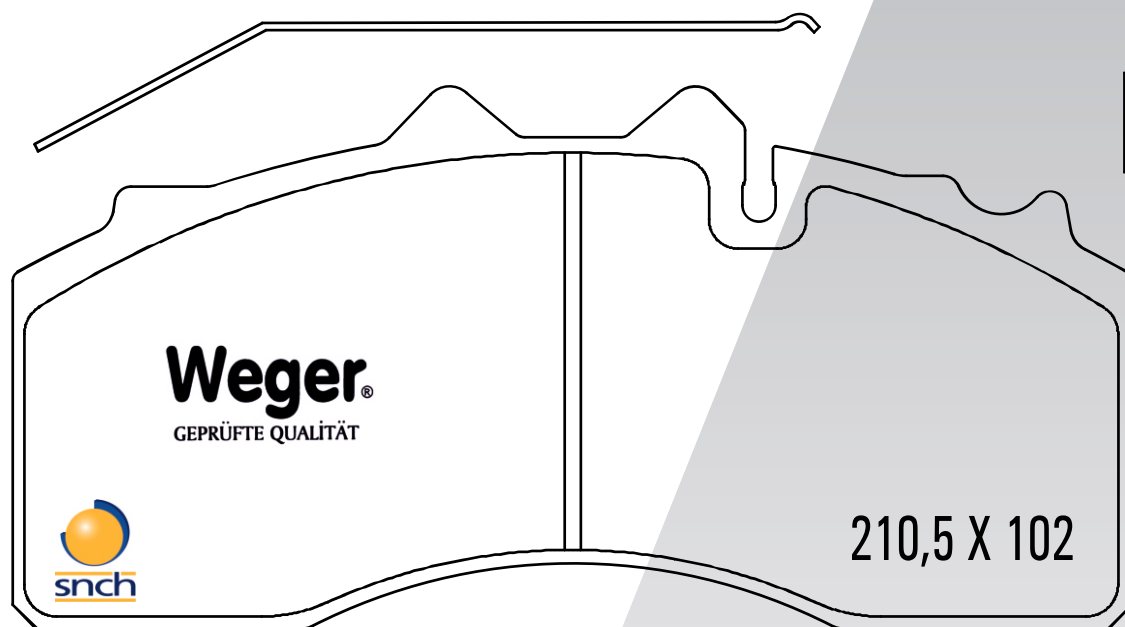


REFERENCE	T (mm)	REMARK	MAKE	F/R	WVA No
WGR1029195	30	4 PADS PLAIN	SAF	R	29175 29195

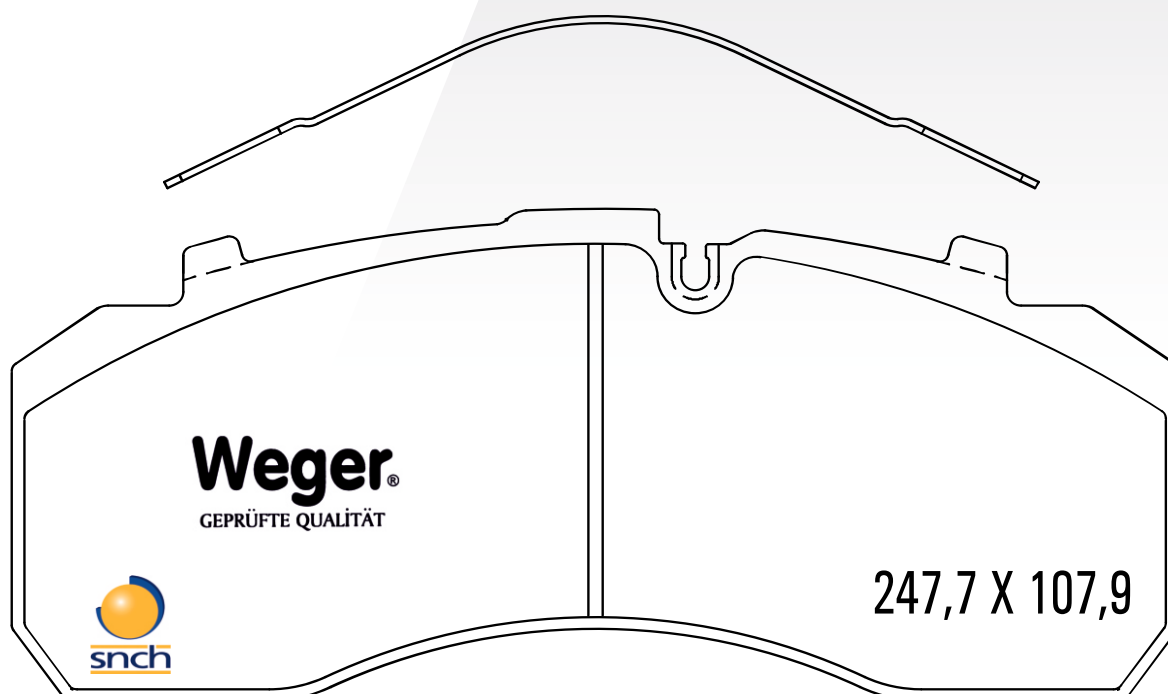


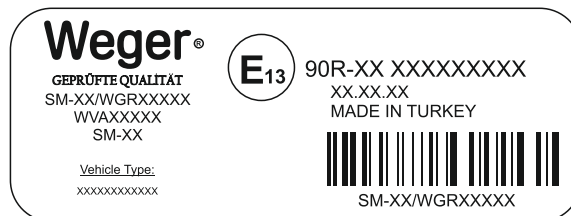
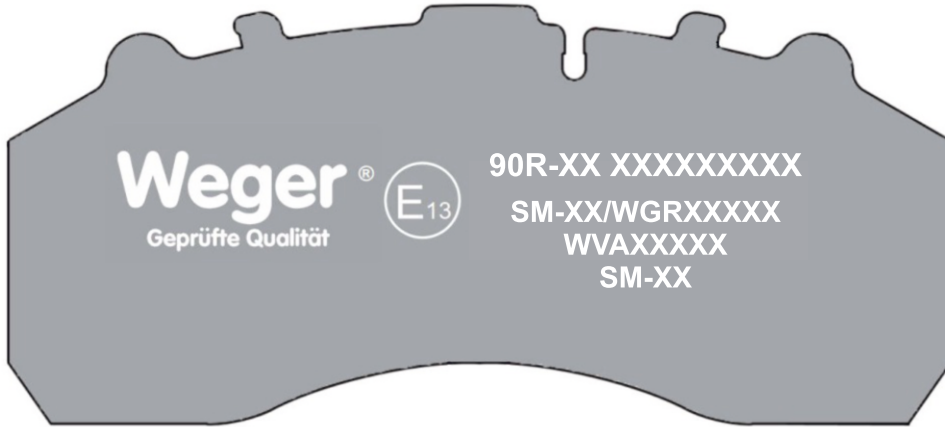


REFERENCE	T (mm)	REMARK	MAKE	F/R	WVA No
WGR1029227	30	4 PADS PLAIN	BPW	F/R	29227



REFERENCE	T (mm)	REMARK	MAKE	F/R	WVA No
WGR1029253	30	4 PADS PLAIN	MAN	F/R	29253





## TEST SONUÇLARI

\* I.C.1874.002.21 \* WEGER \* SM-XM-WGRXXXXX \* ~ RXX \*

Complies  
Yes / NA

**Test Results - Front/Rear**

R90-Ams 4.1,2,11.1.1  
R13-Ams 4+14.3.1

**Type 0 - Unladen**

Yes

	Nominal Speed (km/h)	Test Speed (km/h)	Test Distance (m)	Limit Distance (m)	Test MFDD ( $\text{m/s}^2$ )	Limit MFDD ( $\text{m/s}^2$ )	Pedal Effort daN	Pedal Effort Limit daN
In gear	90	90,19	55,74	76,10	5,36	4,00	50	70

R90-Ams 4.1,2,11.1.1  
R13-Ams 4+14.3.1

**Type 0 - Laden**

Yes

	Nominal Speed (km/h)	Test Speed (km/h)	Test Distance (m)	Limit Distance (m)	Test MFDD ( $\text{m/s}^2$ )	Limit MFDD ( $\text{m/s}^2$ )	Pedal Effort daN	Pedal Effort Limit daN
Neutral	60	60,60	24,40	37,34	5,71	5,00	50	70
In gear	90	90,74	65,67	76,95	4,80	4,00	50	70

R90-Ams 4.1,2,11.1.1  
R13-Ams 4.1,2,14.3.1

**Type I - Faded Test**

Yes

	Nominal Speed (km/h)	Test Speed (km/h)	Test Distance (m)	Limit Distance (m)	Test MFDD ( $\text{m/s}^2$ )	Limit MFDD ( $\text{m/s}^2$ )	Pedal Effort daN	Pedal Effort Limit daN
Neutral	60	60,04	24,72	43,67	5,24	4,00	50	70

Not Applicable

**Recovery Performance**

NA

	Nominal Speed (km/h)	Test Speed (km/h)	Test Distance (m)	Limit Distance (m)	Lower Limit MFDD ( $\text{m/s}^2$ )	Test MFDD ( $\text{m/s}^2$ )	Upper Limit MFDD ( $\text{m/s}^2$ )	Pedal Effort daN	Pedal Effort Limit daN
Neutral	60	-	-	-	-	-	-	-	70

R90-Ams 4.1,2,11.1.1.4  
R13-Ams 4+14.3.1

**Type II - Fade Test**

Yes

	Nominal Speed (km/h)	Test Speed (km/h)	Test Distance (m)	Limit Distance (m)	Test MFDD ( $\text{m/s}^2$ )	Limit MFDD ( $\text{m/s}^2$ )	Pedal Effort daN	Pedal Effort Limit daN
Neutral	60	60,73	29,62	50,60	4,53	3,30	50	70

R90-Ams 4.1,2,11.1.1

**Parking Brake**

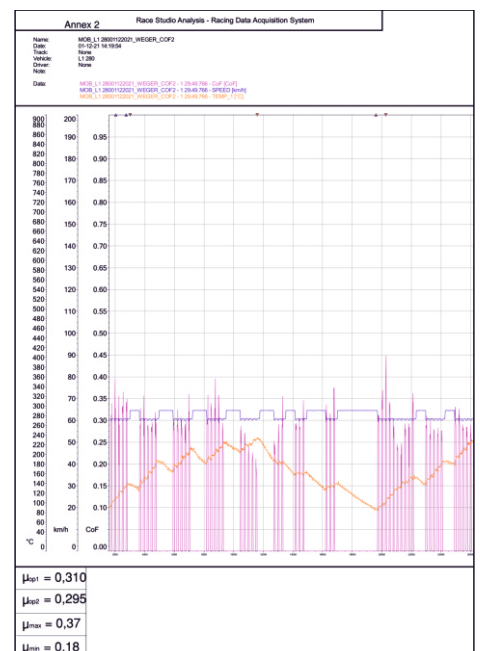
Yes

	Nominal Gradient	Test Gradient	Direction	Control Force daN	Limit daN
	18	18	Up	40	50
	18	18	Down	40	50

**Test Results - Mechanical Characteristics**

Machine test results (friction behaviour, shear strength and compressive strain) are given in Annex C on page 5.

## BEST GRAPHS





# Weger®

GEPRÜFTE QUALITÄT

STRONGEST BRAKE  
PERFORMANCE

DURANGE IN THOUSANDS OF  
MILEAGE

SAVE MONEY WITH  
LOWER COST

## WEGER BRAKE PADS YOU CAN ALWAYS TRUST IN

### WEGER MOTORLU ARAÇLAR SAN. VE TİC. A.Ş.

Fabrika: Hatip Mah. Sarı Salkım Sk. No:8/1 Çorlu/TEKİRDAĞ  
Türkiye Phone: +90 282 650 10 46 - Fax: + 90 282 650 10 55  
info@weger.com.tr

### İSER OTOMOTİV VE PLAS. SAN. TİC. LTD. ŞTİ.

Hatip Mah. Sarı Salkım Sk. No: 8 /2 Çorlu/ TEKİRDAĞ  
Türkiye Phone: +90 282 650 10 46 - Fax: + 90 282 650 10 55  
info@weger.com.tr

### WEGER N.A.

6448 Autumn Woods Way Sarasota, FL 34243 USA  
Phone: + 1 248 961 3271  
synergie.maa@gmail.com

[www.weger.com.tr](http://www.weger.com.tr)